



# *Guiding Light*

July/August, 2023



## **TORONTO BUDDHIST CHURCH** *a Jodo Shinshu Temple*

1011 Sheppard Ave West  
Toronto, Ontario, Canada, M3H 2T7  
(416) 534-4302    [www.tbc.on.ca](http://www.tbc.on.ca)

**UPCOMING SERVICES**PLEASE CHECK THE WEBSITE FOR AUGUST/SEPTEMBER. [tbc@tbc.on.ca](mailto:tbc@tbc.on.ca)

		Kids' Sangha 10:15 am	11:00 AM	1:00 PM
		In Person	In Person & Zoom	In Person & Zoom
JULY 8, 2023	OHAKAMAIRI— SEE SCHEDULE ON NEXT PAGE	KIDS SANGHA RESUMES IN SEPTEMBER	NONE	NONE
JULY 9, 2023	HATSUBON— BILINGUAL GUEST SPEAKER— REV. GUBENCO	NONE	9:00 AM	NONE
JULY 9, 2023	OBON SERVICES	NONE	ENGLISH GUEST SPEAKER REV. GUBENCO	JAPANESE REV. OUCHI
JULY 16, 2023	SUMMER SERVICE	NONE	ENGLISH— DENNIS MADOKORO	NONE
JULY 23,2023	SUMMER SERVICE	NONE	ENGLISH JEFF WILSON SENSEI	NONE
JULY 30, 2023	SUMMER SERVICE	NONE	ENGLISH	NONE
AUGUST 6, 2023	MONTHLY MEMORIAL SERVICES (SHOTSUKI)	NONE	ENGLISH	JAPANESE

**TBC 2023 Obon Guest Minister****Rev: Robert Gubenco**

Robert Anraku Gubenco is the Resident Minister at the Calgary Buddhist Temple, completing Tokudo ordination training in Kyoto, Japan in November 2014, and Kai-Kyoshi in 2019. He is a firm believer in the mind, body and spirit connection and credits his spiritual growth to the Jodo Shinshu teachings.

He was born and raised in Montreal, Quebec. As a teenager, he lived in Hamilton, Ontario for five years, and in 1983 he moved to Calgary, Alberta which continues to be his home. His other interests are drumming, photography, pilates, hot yoga, cycling and warm vacation spots



**OHAKAMAIRI CENTRAL SERVICES SATURDAY JULY 8, 2023**

<b>CEMETERY</b>	<b>CENTRAL LOCATION</b>	<b>TIME</b>	<b>SERVICE LEADER</b>
SALEM U.C		11:00 AM	PAULINE KNUDE
PINE RIDGE MEMORIAL		12:00 PM	PAULINE KNUDE
ELGIN MILLS CEMETERY	SECT. 2/8	11:30 AM	DENNIS MADOKORO
HIGHLAND MEMORIAL GDNS	MAUSOLEUM NEAR PARKING LOT	9:30 AM	DENNIS MADOKORO
PINE HILLS CEMETERY	SECT. 7	9:30 AM	KEN SHIGEISHI
RESTHAVEN MEMORIAL GDNS	CIRCLE GARDEN	10:45 AM	KEN SHIGEISHI
YORK MEMORIAL CEMETERY	POND WEST OFF SENLAC	9:30 AM	REV. OUCHI
PROSPECT CEMETERY	DIRECTLY IN FRONT OF THE ENTRANCE UNDER THE TREE, LEFT SIDE	10:45 AM	REV. OUCHI
PARK LAWN CEMETERY	IN FRONT OF PARADISE MAUSOLEUM, SECT. 5	11:45 AM	REV. OUCHI
TORONTO NECROPOLIS	JUST INSIDE GATES	9:00 AM	REV. GUBENCO
ST. JAMES CEMETERY	TBA	9:30 AM	REV. GUBENCO
MT. PLEASANT CEMETERY	SECT. 51 BY SUNDIAL NEAR BAYVIEW AVE.	10:15 AM	REV. GUBENCO
GLENDALE CEMETERY		9:30 AM	JOHN NISHIKAWA
GLEN OAKS CEMETERY	SOUTH SIDE OF STRUCTURE 3, UNDER TREES. KITTY CORNER TO CHINESE BURIAL SECT. ROAD FARTHEST FROM AND PARALLEL TO 9 <sup>TH</sup> LINE	9:30 AM	JEFF WILSON SENSEI
SPRING CREEK	SECT. M52. ROAD PARALLEL TO CLARKSON RD., AT BACK OF THE CEMETERY. BIG TREE OPPOSITE TO SWITZER PLOT	10:30 AM	JEFF WILSON SENSEI
SANCTUARY NORTH & SOUTH	MEET IN PARKING LOT, SOUTH SIDE	9:00 AM	SUSAN EBISUZAKI
RIVERSIDE CEMETERY		9:30 AM	SUSAN EBISUZAKI

**PLEASE NOTE THAT THIS SCHEDULE MAY BE SUBJECT TO CHANGE DUE TO UNFORESEEN CIRCUMSTANCES. PLEASE CONSULT THE TBC WEBSITE [tbc@tbc.on.ca](mailto:tbc@tbc.on.ca) OR THE JULY/AUGUST ISSUE OF THE GUIDING LIGHT**

**“Bussho” Buddha Nature**

Today I would like to talk about “仏性-Bussho” “仏-Bu” means Buddha and a fully Awakened Person. “性-Sho” means Nature. Bussho means Buddha-Nature or the Nature of a fully Awakened Person.

It’s said that all sentient beings have the Buddha Nature to achieve supreme wisdom and compassion.

Rev. Kenryu Tsuji said, “*Buddha-Nature is the innate capacity to look upon all beings with great compassion. ... Buddha-Nature makes people a Buddha. The ultimate message of the Buddha was, “Awaken the Buddha-nature in yourself.” It is this message that we must clearly hear.*”

Buddha-Nature is not restricted solely to human beings. *Nehan-kyo-涅槃經*: Nirvana sutra says “San Sen So Moku Shitsu U Bussho 山川草木悉有仏性.” That means mountains, rivers, grass, trees and all living things have Buddha-Nature.

This means not only human beings but also sentient beings in the universe possess the capacity to become a Buddha. A notable point of the sutra is that a human cannot make Bussho by their own efforts.

In other words, Buddha-Nature is not something we create. Buddha created it for all living things, like our *shinjin* - entrusting heart.

When we realized this, we place our palms together and say “Namo Amida Butsu” to express our appreciation.

“Buddha-Nature” is sometimes translated as “Buddha Seed” in English, because if there is no seed, no flower can bloom. The Buddha seed blooms the Buddha flower in our heart to make us a Buddha.

Shinran Shonin wrote about the Buddhist flower in *Shoshinge*. Shinran Shonin said,

“一切善悪凡夫人 *Issai Zenmaku Bonbunin*  
聞信如来弘誓願 *Monshin Nyorai Guzeigan*

仏言広大勝解者 *Butsugon Koudai Shogेशa*

是人名分陀利華 *Zennimyo Fundarike.*”

“All *Bonbu* – foolish being, whether good or evil, Who listen to the Dharma and trust in universal deliverance, Receive Buddha’s praises as people of great understanding; Such people are called “Fundarike”

“Fundarike” comes from the Sanskrit language. It’s originally pronounced “Pundarika”. Pundarika means a white lotus flower. Why did Shinran Shonin use this word in *Shoshinge*? Because the white lotus flower is called the Buddhist flower.

Moreover, the flower represents a Buddha seed and Buddha’s pure land. A lotus flower blooms from the mud. The mud represents our deep desire and attachment. If we are in the mud, we would never be able to see the sky.

Therefore, Buddha gave us Buddha’s seed so that we have the opportunity and cause to bloom a flower to see the sky.

However, we have *Bonno*. It’s difficult to become a Buddha through our own power.

Thus, Shinran Shonin said when someone who has *Bonno*, listens to the Dharma, they receive Buddha’s praises as people of great understanding.

Amida Buddha’s great Wisdom guides the flower to bloom from the mud, or I could say that Buddha’s wisdom guides us to bloom as a Buddha’s white lotus flower from our *Bonno*.

The light of Amida Buddha’s great wisdom and compassion shine on all living things and it’s working for them all the time.

So to Amida Buddha, whether you have experienced happiness, sadness, good time or difficult time, you are still able to receive Buddha Nature.

In Gassho

Rev. Yoshimichi Ouchi

**VOLUNTEERS NEEDED**

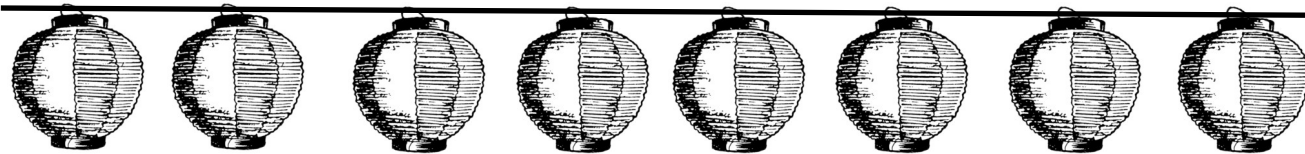
Volunteers are needed for altar flower arranging. Share your artist flare. No experience required.

Contact the office if interested.

Phone: 416-534-4302

Or email: [tbc@tbc.on.ca](mailto:tbc@tbc.on.ca)





On Obon Sunday, **July 9**, the first service of the day at **9:00 AM** is for **Hatsubon families**. All those who have lost a family member in the past year, attend Hatsubon (First Obon) memorial service to honour and respect their loved one. Please find below the listing of names of individuals who will be remembered with a hanging Chochin (lantern) in the Hondo. Please accept our apologies if we have missed any names off our list of loved ones who have passed away during this period. Thank you

H  
A  
T  
S  
U  
B  
O  
N  
2022  
T  
O  
2023

- |                         |                            |                       |
|-------------------------|----------------------------|-----------------------|
| HASHIMOTO, Hidemu       | KUMAGAI, Hiroshi           | KAWASAKI, Mary Akiko  |
| YONEMURA, George Mamoru | FURUKAWA, Jean Yasuko      | OHASHI, Giichi Frank  |
| IMAI, Teruko            | MICHIBATA, Suyeko          | OHORI, Joe            |
| YOSHIDA, Tomoko         | CARROLL, Agnes Junko       | SHIKATANI, Shirley    |
| KAWAI, Margaret Takako  | MacRAE, John               | NOBUTO, Yoko Nancy    |
| INOUYE, Sanaye          | TSCHIRHART, Maureen Mariko | MATSUMOTO, Tsuneo     |
| KURAHASHI, Yoshie Faye  | IWASHITA, Shaly            | GEKKO, Kimiko         |
| FUJIMOTO, Tamae         | TAKEDA, Yumiko Mickey      | OHASHI, Irene Setsuko |
| NAGAI, Dr. Jiro         | MATSUMOTO, Sachiko Joyce   | MUKAI, Isamu          |
| MOTOMURA, Hiromu Robert | NISHIMURA, Raymond Dan     | SHIMIZU, Kazuko       |
| SAWADA, Miho            | HAKODA, Kenneth Yukio      |                       |

\* \* \* \* \*

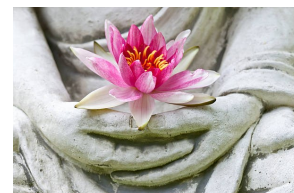
Our Guest Speaker for Obon weekend, July 8th and 9th, will be Gubenco Sensei of the Calgary Buddhist Temple. Please join us as we welcome him to Toronto !! Hope to see you !

**OBITUARIES**

*The Toronto Buddhist Church wishes to extend its deepest condolences to the families, relatives and friends of the following individuals who have passed away.*

*If we have missed any names, please notify the Temple office so that we may update our records.*

Thank You ,  
In Gassho, Toronto Buddhist Church



- |                     |        |               |
|---------------------|--------|---------------|
| Mrs. Kazuko Shimizu | 95 yrs | May 26, 2023  |
| Ms. Miho Sawada     | 78 yrs | May 31, 2023  |
| Mr. Kenneth Hakoda  | 69 yrs | June 10, 2023 |

### Memorial (Shotsuki) Listing for the Month of August

Our monthly memorial services (shotsuki) are usually held on the first Sunday of each month to remember and honour those who have passed away in that month regardless of year.

Usually, mail reminders are sent out to the next of kin but due to changing circumstances we have not always been able to reach families and hope that by publishing the names of those who have passed, we can still reach and remind families and dear friends of the month of their loved ones honouring.

Below is our listing of our members and supporters who have passed away during the month of **August**. All are invited and welcome to attend.

<b>ANDREONE</b> , Jo Anne Yasuko	<b>KAJI</b> , Jiro	<b>NAKAMURA</b> , Ginpachi	<b>TAKEHISA</b> , Michiko
<b>ARIZA</b> , Darrell Patrick	<b>KAKINOKI</b> , John Mashiro	<b>NAKANISHI</b> , Kenichiro	<b>TANAKA</b> , Mitsuo
<b>AZUMA</b> , Sano	<b>KAWABATA</b> , Masao	<b>NAKATSU</b> , Yoshiharu	<b>TANAKA</b> , Nobby Nobuyoshi
<b>BABA</b> , Teruko	<b>KAWAGUCHI</b> , Kameo	<b>NARUSE</b> , Kimi	<b>TANAKA</b> , Jinya
<b>BABA</b> , Tejiro	<b>KISHIBE</b> , Tokichi	<b>NATSUHARA</b> , Kichi	<b>TANAKA</b> , Mine
<b>BANDO</b> , Mark	<b>KITAMURA</b> , Masaru	<b>NISHIMOTO</b> , Harumi	<b>TANAKA</b> , Tatsuya
<b>CHIA</b> , Kean Weng	<b>KOBAYASHI</b> , Shigeno	<b>NISHIMURA</b> , Albert Masatoshi	<b>TANAKA</b> , Yoshiko
<b>CHIJIWA</b> , Yoko	<b>KOBAYASHI</b> , Teruya	<b>NISHIMURA</b> , Eitaro	<b>TATEBE</b> , Kazuo
<b>EBATA</b> , Matsuko Betty	<b>KOBAYASHI</b> , Tokujiro	<b>OHASHI</b> , Giichi	<b>TERASHITA</b> , Allen Akitoshi
<b>EBATA</b> , Joe Ryota	<b>KOBAYASHI</b> , Yoko	<b>OHASHI</b> , Ross Shozo	<b>TOKUYAMA</b> , Fumie
<b>EBISUZAKI</b> , Hide	<b>KONDO</b> , Harry Shota	<b>OKAZAKI</b> , Robert	<b>TOYAMA</b> , Akiko
<b>EGUCHI</b> , Shizu	<b>KONDO</b> , Kimiko	<b>OMOTO</b> , Sada	<b>TSURUDA</b> , Kikuye
<b>ETO</b> , Shigeko	<b>KONDO</b> , Shigeo	<b>OTAGURO</b> , Sumiye	<b>TSUSHIMA</b> , Ayako
<b>FUJITA</b> , Hikosaku	<b>KONISHI</b> , Fujiko	<b>SAITO</b> , Fred Ichiro	<b>URA</b> , Taneshiro
<b>FUJITA</b> , Kii	<b>KOSHIBA</b> , Hiroshi Ben	<b>SAKAI</b> , Nobuko Jean	<b>UYENAKA</b> , Masayuki
<b>FUKUMORI</b> , Hatsuno	<b>KUROYAMA</b> , Sannosuke	<b>SAKURA</b> , Hikotaro	<b>WAKISAKA</b> , Minoru Lefty
<b>FUKUMOTO</b> , Umechiyo	<b>KUSHIDA</b> , Takashi	<b>SATO</b> , Akira Mooney	<b>WATANABE</b> , Tsuneharu
<b>FURUKAWA</b> , Gentaro	<b>MATSUDA</b> , Shizuka	<b>SATO</b> , Keiko	<b>WATARI</b> , Gentaro
<b>FURUYA</b> , Minoru	<b>MATSUYAMA</b> , Hikohei	<b>SATO</b> , Sadamu	<b>YAMAMOTO</b> , Etsu
<b>GYOTOKU</b> , Unta	<b>MILLARD</b> , Mayuko	<b>SHIGA</b> , Teruji Terry	<b>YOKOTA</b> , Kenji
<b>HAKKAKU</b> , Kiyo	<b>MITSUKI</b> , Yukio	<b>SHIKATANI</b> , Hisaya	<b>YONEMURA</b> , Kaoru
<b>HAMAMOTO</b> , Yoshio	<b>MIYAGAWA</b> , George Kiichiro	<b>SHIKATANI</b> , Ino	<b>YOSHIKAWA</b> , Hatsue
<b>HARA</b> , Kiyoji	<b>MIYANISHI</b> , Yoshie Minnie	<b>SHIKATANI</b> , Yohei	<b>YOSHIKAWA</b> , Toshiko
<b>HIDAKA</b> , Kathy Ling Fai Ling	<b>MIYAUCHI</b> , Shozo Bob	<b>SHIMONO</b> , Shiroemon	
<b>HIGUCHI</b> , Hisakichi	<b>MIZUYABU</b> , Reiko	<b>SHIN</b> , Yeda	
<b>HIKIDA</b> , Kikue	<b>MORI</b> , Misako	<b>SHINMOTO</b> , Hisayo	
<b>HORI</b> , Yoshio	<b>MORI</b> , Shozo	<b>SHIOZAKI</b> , Douglas Masato	
<b>HOSAKI</b> , George Kazuki	<b>MOTOTSUNE</b> , Marie Satsuko	<b>SHIRAISHI</b> , Isamu	
<b>IKEBATA</b> , Masao	<b>MUKAI</b> , Takeno	<b>SHOJI</b> , Tsunehiro Tony	
<b>IMAI</b> , Jiro	<b>MURAI</b> , Ben Tsutomu	<b>SHOJI</b> , Genji Gene	
<b>INOUE</b> , Bruce Keigo	<b>MURATA</b> , Hanae	<b>SUMIDA</b> , Yoshinari	
<b>ITO</b> , Akitaro	<b>NABETA</b> , Matsuichi	<b>SUYAMA</b> , Kenji Larry	
<b>ITO</b> , Lily Yuriko	<b>NAGAO</b> , Kazuko Betty	<b>TAKANO</b> , Denji	
<b>ITO</b> , Peter Shizuma	<b>NAKABAYASHI</b> , Hiroshi	<b>TAKASAKI</b> , Matsue	
<b>ITO</b> , Zenya	<b>NAKAGAWA</b> , Miyoko	<b>TAKEDA</b> , Augusta Suma	
		<b>TAKEDA</b> , Kumasaburo	

**Memorial (Shotsuki) Listing for the Month of September**

Our monthly memorial services (shotsuki) are usually held on the first Sunday of each month to remember and honour those who have passed away in that month regardless of year.

Usually, mail reminders are sent out to the next of kin but due to changing circumstances we have not always been able to reach families and hope that by publishing the names of those who have passed, we can still reach and remind families and dear friends of the month of their loved ones honouring.

Below is our listing of our members and supporters who have passed away during the month of **September** All are invited and welcome to attend.

<b>AMEMORI</b> , Rinzo Jon	<b>INAMOTO</b> , Allan Yukio	<b>MASUDA</b> , Suyekichi	<b>OHARA</b> , Kinosuke
<b>ASADA</b> , Mitsuru	<b>INAMOTO</b> , William Akira	<b>MATSUBA</b> , Kenneth Brian Yukio	<b>OHASHI</b> , Shizuko
<b>AYUKAWA</b> , Robert Noboru	<b>ISHIDA</b> , Yoshiro	<b>MATSUOKA</b> , Haruno	<b>OHASHI</b> , Uta
<b>AZUMA</b> , Ikichi	<b>ITO</b> , Dick Hideki	<b>MITSUKI</b> , Shige	<b>OMOTO</b> , Paul
<b>BABA</b> , Hisaye	<b>ITO</b> , Suga	<b>MIYASAKI</b> , Nobu	<b>ONO</b> , Isao
<b>BABA</b> , Tatsuo	<b>IWASAKI</b> , Suye	<b>MORI</b> , Kinu	<b>OTAGURO</b> , Sumiye
<b>EBATA</b> , Genei	<b>IWASHITA</b> , Motaro	<b>MORIMOTO</b> , Ikunosuke	<b>PULS</b> , Ron
<b>EBATA</b> , Shio	<b>KAIURA</b> , Hideo	<b>MORIMOTO</b> , Takeo	<b>SAITO</b> , Sally Shizue
<b>EDAMURA</b> , John Hideo	<b>KAMADA</b> , Masu	<b>MORISHITA</b> , Harold Hiroshi	<b>SAKAUYE</b> , Kazuo
<b>EJIMA</b> , Hatsujiro	<b>KATO</b> , Katsujiro	<b>MORISHITA</b> , Kamekichi	<b>SAWAYAMA</b> , Aya
<b>FUJII</b> , Rinnosuke	<b>KAWAMOTO</b> , Chujiro	<b>MURAKAMI</b> , Itoku	<b>SEKIMOTO</b> , Yasuko
<b>FUJII</b> , Jean Misako	<b>KIKUCHI</b> , Kamematsu	<b>MURANAKA</b> , Kenneth Kenichi	<b>SEKO</b> , Shigeo
<b>FUJINO</b> , Iwajiro	<b>KISHIMOTO</b> , Seikichi	<b>MURATA</b> , Matsutaro	<b>SHIBATA</b> , Yoshikazu
<b>FUJINO</b> , Shizue	<b>KISHIMOTO</b> , Yo	<b>NAKAGAWA</b> , Katsujiro	<b>SHIMONO</b> , Sakino
<b>FUJIOKA</b> , Yonesaku	<b>KIYONAGA</b> , Chiyoko May	<b>NAKAGAWA</b> , Margaret Fumiko	<b>SHIN</b> , Zentaro
<b>FUKAKUSA</b> , Mariko	<b>KIYONAGA</b> , Don Kitaji	<b>NAKAHARA</b> , Genichiro	<b>SHINYA</b> , Shinsuke
<b>FUKUMA</b> , Hirotsuke	<b>KIYONAGA</b> , Kiheiji	<b>NAKATSU</b> , Kichinosuke	<b>SHIOMI</b> , Masayoshi
<b>FUKUSHIMA</b> , Shizue Sue	<b>KOBAYASHI</b> , Kenichiro	<b>NAKATSU</b> , Tsunekichi	<b>SHIRAIISHI</b> , Robert Bob Shigeo
<b>GIGA</b> , Fujiko	<b>KOBAYASHI</b> , Kiyoshi	<b>NAKAUCHI</b> , Seki	<b>SHOJI</b> , Yoshiko Mary
<b>HALLISCHUK</b> , Joanne Yoshiko	<b>KODAMA</b> , Isamu	<b>NISHI</b> , Yukari Lolly	<b>TAHARA</b> , Mamoru Mum
<b>HARADA</b> , Chiyono	<b>KOKURA</b> , Mitsuo	<b>NISHIJIMA</b> , William Shigetada	<b>TAHARA</b> , Noboru
<b>HATANAKA</b> , Sueko	<b>KONDO</b> , Yuki	<b>NISHIKAWA</b> , Takako Molly	<b>TAJIMA</b> , Takakazu
<b>HAYASHI</b> , Gibson	<b>KONISHI</b> , Helen Haruye	<b>NISHIKAWA</b> , Taro	<b>TAKAHASHI</b> , George Yoshikazu
<b>HAYASHI</b> , Doreen Akemi	<b>KOSHIDA</b> , Thomas Yoichi	<b>NISHIKAWA</b> , Tomijiro	<b>TAKAHASHI</b> , Torao Tote
<b>HIGA</b> , Matsu	<b>KOYAMA</b> , Katsuko	<b>NISHIMURA</b> , Alyce Asa- no	<b>TAKANO</b> , Shizue
<b>HIKIDA</b> , Tsunekichi	<b>KUMABE</b> , Masayuki	<b>NISHIMURA</b> , Yutaka Glenn	<b>TAKATA</b> , Ichiro
<b>HONKAWA</b> , Kyuhachi	<b>KURAHASHI</b> , Satoru Sam	<b>NISHINO</b> , Richard Su- sumu	<b>TAKATA</b> , Morikichi
<b>HUANG</b> , Chan Nuan Po	<b>KUROYAMA</b> , Iwa	<b>NISHIYAMA</b> , Catherine Hisako	<b>TAKEMURA</b> , Soichiro James
<b>ICHI</b> , Miyo	<b>KUSHIDA</b> , Imaji	<b>NISHIZAKI</b> , Marion Kiku	<b>TAKISHITA</b> , Isami
<b>ICHI</b> , Seinojo	<b>KUSHIDA</b> , Shirley Sachiko	<b>NOMURA</b> , Lucy Toshiko	<b>TANAKA</b> , Chiyo
<b>ICHI</b> , Tokumatsu	<b>LEBA</b> , Thanh	<b>NOZOE</b> , James Akira	<b>TANAKA</b> , Kisa
<b>IGARASHI</b> , Toyono	<b>MA</b> , Junko		<b>TANAKA</b> , Saburo
<b>IKEBATA</b> , Natsue	<b>MAEHARA</b> , Jiro		
<b>INAMOTO</b> , Kishi	<b>MAEHARA</b> , Mutsuko		
<b>INAMOTO</b> , Yoshi	<b>MAEKAWA</b> , Iwajiro		

Continued on page 7

**Memorial (Shotsuki) Listing for the Month of September**

<b>TANAKA, Saburo</b>	<b>TOJI, Toku</b>	<b>TSURUDA, Shuzo</b>	<b>YAMASHITA, Suwa</b>
<b>TATEBE, Kazutaro</b>	<b>TOKUYAMA, Akira</b>	<b>UCHIDA, Minoru</b>	<b>YONEKURA, Sumiye</b>
<b>TATEISHI, Tsugeko</b>	<b>TSUJI, Allan Takeru</b>	<b>URA, Tomoye</b>	<b>YOSHIDA, Hideo</b>
<b>TEHARA, Joe Heijiro</b>	<b>TSUJI, Shinichi Fred</b>	<b>WAKISAKA, Takashi</b>	<b>YU, Song Shing and Hsieh Wei</b>
<b>TEHARA, Kazuko</b>	<b>TSUJI, Tsuru</b>	<b>WAKISAKA, Yasuo</b>	
<b>TERAKAWA, Sadako</b>	<b>TSUKADA, Masao</b>	<b>WATADA, Chisato</b>	
<b>TOHANA, Shigeo</b>	<b>TSUKAMOTO, Hana</b>	<b>YAKO, Tokuzo</b>	

**LES TANAKA (FORMER PRESIDENT), DONNA NAKANO (FORMER VICE PRESIDENT & SECRETARY)**

From WW2 until 2020 most Canadians have been relatively unscathed from much of the turmoil that has afflicted the rest of the world. Then Covid turned our world upside down. Through the pandemic and quarantine our former Board of Directors has guided the TBC through many challenges to maintain the temple and keep our congregation safe. Under the leadership of Rev. Ouchi, Joanne Sensei, our former president Les Tanaka and Vice President Donna Nakano services were restarted. Who would have thought that Zoom has become a replacement for many as an alternate mode for Sunday services? It is through their dedication, innovation and hard work that the temple was maintained. Negotiating contracts, dealing with legal and financial issues liaising with both Buddhist and other religious organizations, devising health protocols, washing dishes, gardening, snow shovelling and other unseen responsibilities are the all tasks we all deeply appreciate. We hope we can emulate their examples in serving the TBC. With sincere respect and gratitude.

In Gassho,

Susan Ebisuzaki ( co president TBC ) Michael Tamaki (co president TBC )

*THANK YOU*

**SANGHA'S SPRING INTO SUMMER PARTY, JUNE 18, 2023**



***A GOOD TIME WAS  
HAD BY ALL WHO  
ATTENDED.  
THANK YOU SANGHA  
AND VOLUNTEERS***





### Wasaga Beach Cottage Rental

Summer is just around the corner. Don't wait until the last minute to book a cottage.

Camp Lumbini cottages are available for rent. Each cottage has running water, a shower, a flush toilet and a fully equipped kitchen.

What a great family vacation, just 1.5 hours drive from Toronto. Wasaga Beach is just a short two-minute walk from the cottages. The surrounding area also offers convenient shopping and entertainment such as canoeing, kayaking, mini golf, go carts and bowling.

The cottages are available from May 7 to Sept. 31. All pets are welcome.

Please contact the office for rates and available dates.

Note: The renter of the cabin(s) must be a member of Toronto Buddhist Church.

Office: 416-534-4302 E-mail: [tbc@tbc.on.ca](mailto:tbc@tbc.on.ca)



Doors to Family Memories

### GARDEN TOOLS, WORKSHOP TOOLS

Please consider donating your workshop tools and garden tools to the Temple. We will put them to good use.



Please contact the **Tools** Office: 416-534-4302 E-mail: [tbc@tbc.on.ca](mailto:tbc@tbc.on.ca)

### Camp Lumbini 2023!

**CALLING ALL YOUTH AGES 8—15!**

**We will be having Camp Lumbini, Sunday July 30th to Saturday August 5th**

You can earn volunteer hours for your support!

Jr. Counselors 16

Sr. Counselors 18+

For more details, contact Abigail Kataoka -

[abigail-kataoka@hotmail.com](mailto:abigail-kataoka@hotmail.com)

Thank you to Mizuki for creating this wonderful poster!

We look forward to seeing you all in the summer!!

- Abigail



## TBC DANA SCHOLARSHIP INVITES APPLICATIONS

The Toronto Buddhist Church Dana Scholarship Committee invites all qualified, graduating students to apply for a scholarship.

### **Eligibility:**

Students who are first time applicants and who are members or who are children or grandchildren of members of a temple/church in the Eastern District of the Jodo Shinshu Buddhist Temples of Canada and who will be attending their first year of post-secondary education at a recognized institution such as a university, college, institute of technology, etc.

All applications must be submitted in writing and accompanied by a Letter of Reference. The amount of the scholarship is dependent on monies available each year end and is at the discretion of the Committee.

The selection criteria will be as follows:

If you wish to apply for a scholarship, please contact the office at [tbc@tbc.on.ca](mailto:tbc@tbc.on.ca) or 416-534-4302 and an application form will be forwarded to you as soon as possible.

**\*\* DEADLINE for the scholarship application is Saturday, July 8, 2023 \*\***

Academic results	50%
Church activities	30%
School and Community Involvement	10%
Essay (min 300 words)	10%
Total	100%

## FOREIGN COINS and USED STAMP COLLECTION

### Attention Temple Members

Now that the Temple is open again, the JSBTC Women's Federation would appreciate members collecting and donating any used stamps and foreign coins they may receive or have.

Please bring in any foreign coins/bills from your travels or stamps from correspondence. The Women's Federation collects for Air Canada charity. Any collection of stamps and coins/bills will be sent to Save The Children. The stamps will be taken to the Women's Federation Annual Meeting at the end of April, 2023 (or when in person meetings begin again). If you have any stamps or coins/bills, a box is provided in the lobby of the Temple. Thank you for your help and support.

JSBTC Women's Federation





# Let's Ondo Again!



Be part of the Japanese-Canadian tradition  
Obon Odori - minyo (Japanese folk dance)



All ages, newcomers welcome

Step by step instructions given

Only 50 cents per practice  
Starts Tuesday, April 18, 2023  
Every Tuesday and Friday  
prior to Obon (July 8, 2023)  
8:00 p.m. - 9:30 p.m.  
(Subject to cancellation)

Toronto Buddhist Church  
Social Hall (basement)  
1011 Sheppard Ave W  
North York, ON, M3H 2T7  
(416) 534-4302  
tbc@tbc.on.ca  
Next to Sheppard West subway station  
Parking available

## Bon Odori 2023

It has been a relatively mild winter and we are awaiting the arrival of spring. Celebrate spring's arrival by learning Bon odori, Japanese folk dances, at the Toronto Buddhist Church. Obon is a Buddhist custom to honour one's ancestors.

The Obon Festival will be held on Saturday, July 8, 2023, 7:00pm at the Japanese Canadian Cultural Centre.

For more information, please contact the Toronto Buddhist Church.

Toronto Buddhist Church  
1011 Sheppard Avenue West  
416-534-4302  
[tbc@tbc.on.ca](mailto:tbc@tbc.on.ca)







# HAVE YOU APPLIED FOR YOUR 2023 TBC MEMBERSHIP?

SOME MAY SAY, "WELL, WHAT'S IN IT FOR ME?"

One could remind us of the following entitlements. You can:

1. Attend special Temple activities free of charge or at rates not available to non-members;
2. Take advantage of free notarial services offered by one of our Temple members; and,
3. Have a real say on important matters affecting the direction of the Temple, including the election of the President and the Directors, and the approval of budgets.

## **TBC WILL BE THERE FOR YOU BUT NEEDS ASSISTANCE**

Supporting the Temple provides you with something that you can't tangibly quantify and put a price on. It's actually something you do for yourself and for our community. That is, your support is your affirmation of the Jodo Shinshu way of life and to support and spread the Dharma. This is what it's really about.

Please make that commitment for 2023. The Temple needs your support to continue to thrive, and it will with your support.

### **REGULAR MEMBERSHIP** (valid Jan 1 - Dec 31)

- To be recognized as a Temple member, please complete the application form as early as possible at the start of each year
- Membership card will be sent once your signed application and membership fee or your promise to pay the total fee have been received
- Please note membership this year is a minimum of \$145.00

### **HONOURARY MEMBERSHIP**

- Issued to all members 77 years of age & over
- Honourary Members do not need to pay any annual membership fees, although all donations are always welcome
- If already an Honourary member simply fill out a membership form each year to confirm your wish to continue Honourary Membership

Can't make it to the Temple? You can submit your application and membership fee online at [tbc.on.ca](http://tbc.on.ca)





## TORONTO BUDDHIST CHURCH

*A Jodo Shinshu Temple*

### 2023 MEMBERSHIP APPLICATION

**In the case of couples, please complete information for each applicant individually.**

Applicant    Renewal ( )    New ( )                      Mr. ( ) Mrs. ( ) Ms. ( )

Last Name: \_\_\_\_\_ Birthdate: dd/mm/yy: \_\_\_\_\_

First Name: \_\_\_\_\_ Email: \_\_\_\_\_

Address: \_\_\_\_\_ Phone: \_\_\_\_\_

City: \_\_\_\_\_ Signature: \_\_\_\_\_

Prov: \_\_\_\_\_ Postal Code: \_\_\_\_\_

I promise to pay \$\_\_\_\_\_ as my Membership Fee for 2023 and am enclosing the amount of \$\_\_\_\_\_ on account of such fee. I will pay the balance of my Membership Fee, if any, by May 31, 2023. By signing this Membership Application, I hereby adopt the vow below.

Signature \_\_\_\_\_ Date \_\_\_\_\_

I would like a Guiding Light mailed to me - English Only \_\_\_\_\_ English/Japanese \_\_\_\_\_

I authorize Toronto Buddhist Church and Jodo Shinshu Buddhist Temples of Canada (JSBTC) to send future mailings and e-mails. I understand I am able to opt out at any time by notifying the Temple. YES \_\_\_\_\_ NO \_\_\_\_\_

#### **As a member of Toronto Buddhist Church, I:**

1. Recognize and accept that our Temple is based on the Jodo Shinshu Pure Land Teachings;
2. Vow to strive to live a life of gratitude and to do my best to care for the welfare of society; and
3. Vow to observe and uphold the Charter and By-laws of the Temple.

トロント仏教会の護持会員として、次の通り誓約いたします。

- 1、お寺を浄土真宗のみ教えに従う人々が集うところとします。
- 2、報恩感謝の生活を送り、自他ともに心豊かに生きることのできる社会の実現に貢献します。
- 3、会則を厳守します。

Please note that this application is for membership from January 1, 2023 to December 31, 2023. The Individual Membership Fee for 2023 is a minimum of \$145. However, the Temple welcomes and will be grateful for any amount over and above this minimum fee.

A tax receipt will be issued for the total Membership amount paid.

Please do not use Offering envelopes to pay membership fees. Instead, please insert them in separate plain envelopes clearly marked "For Membership". Please make any cheques payable to Toronto Buddhist Church.

**A SEPARATE MEMBERSHIP APPLICATION MUST BE FILLED OUT FOR EACH INDIVIDUAL APPLYING. PLEASE SUBMIT A SEPARATE PAYMENT FOR 'MEMBERSHIP ONLY'. PLEASE DO NOT COMBINE WITH DONATIONS.**

### JSBTC WOMEN'S FEDERATION CARD FUNDRAISER

The JSBTC Women's Federation has produced blank cards for sale with images chosen from the many temple members across Canada who submitted designs to feature on the cards. The final artwork chosen for the cards are: Cherry Blossoms by Laurie Takeda of Calgary Buddhist Temple, Castle Two Trees by Y. Izumi of Buddhist Temples of Southern Calgary and Calla Lilies by Ted Akuna of Steveston Buddhist Temple. The cards can be used for any occasion.

A pack of 6 blank cards (4.25" x 5.5") are \$10 a pack. Each pack has 2 cards of each of the three designs.

Please inquire in the office to purchase the cards.



### JUNE THANK YOU'S

A great big Thank You to:

- ◆ Darlene Rieger for arranging the najjin (altar) flowers
- ◆ Emi Nakano for making the manju o-sonae (altar offerings)
- ◆ Darlene Rieger(rice) offerings
- ◆ Donna Nakano & Beverley Kato for bringing sandwiches and watermelon to June Shotsuki
- ◆ Steve Howard and Michael Tamaki for fixing the gate for the Sangha Spring into Summer party
- ◆ To all the volunteers who are always at the Temple to help out every day, week or month.
- ◆ To all those who helped to open Lumbini for Kids Sangha and renters.

We are always in need of volunteers. Please let the office know if you are available to volunteer or fill out the volunteer application on our website, [tbc@tbc.on.ca](mailto:tbc@tbc.on.ca). Let's have some new people to thank.

### **How to donate to Toronto Buddhist Church**

While TBC has had to have its doors closed to visitors for most of the duration of the COVID-19 pandemic, the business of spreading the Shin Buddhist teachings to our sangha and beyond continues. Forwarding a financial donation will help prepare TBC to welcome everyone back to temple.

There are 3 ways to donate to TBC from home:

- **cheque:** mail to 1011 Sheppard Ave. West, Toronto, ON, M3H 2T7
- **E-transfer:** use email address [darlene.rieger@tbc.on.ca](mailto:darlene.rieger@tbc.on.ca)
- **online donation via Paypal:** follow directions on [www.TBC.ca](http://www.TBC.ca) "Make a Donation" page

Please include the purpose of your donation, as well as your **full name, mailing address, email address, and phone number. This is particularly important if you're donating by cheque or e-transfer.** This helps ensure you will receive a donation receipt for tax purposes. Detailed information can also be found on the TBC website: [www.tbc.on.ca](http://www.tbc.on.ca).

Your donations are always greatly appreciated.

Gassho



www.tbc.on.ca 416-291-5144